



## 2023 Board Members:

### President:

Arlene Gross  
RLAT  
Labcorp

### Vice President:

Jen Thompson  
BS, RVT, RLAT  
Labcorp

### Secretary:

Katie Harris  
BS, RLATG  
Labcorp

### Treasurer:

Beth Skiles  
RVT, VTS(LAM), RLATG,  
LSSBB  
IU School of Medicine

## 2023 Council Members:

- Amanda Darbyshire  
DVM, DACLAM  
Purdue University
- Jen King  
LAT, ILAM  
Teconic Biosciences
- Andi Barber  
RVT, LATG  
Labcorp
- Lindsey Dice  
BS, RLAT  
Labcorp
- Stephanie Blevins  
BS, LAT, SRA
- Melony Cambell  
RALAT  
Labcorp



## A Letter From the President:

Happy September Everyone!

Please join me in welcoming a great new group of sponsors and vendors to the Indiana AALAS branch! We truly appreciate their support of our branch revitalization. They will be included in our monthly newsletters. Please make sure to check them out as they are integral to our industry.

The board is working hard to grow our membership. Securing institutional memberships and individual memberships is integral to growing our branch. If you have any interest in helping with this, please reach out and let us know!

We already have an exciting activity planned for our members! INAALAS will have a team for Mutt Strut at White River State Park on October 14<sup>th</sup>.

## In This Issue:

**P.1** A Letter From the President

**P.3** Board Member Spotlight

**P.4** Technician Spotlight

New Facebook Page Information

**P.5** AALAS Puzzle of the Month

Mutt Strut Event Information

**P.7** 2024 INAALAS Membership Info

**P.8** Upcoming Save the Dates

AALAS Puzzle Answers

If you are interested in joining our team please check out this link: [Mutt Strut 20th Anniversary 5K Biscuits & Brews Fun Run / Walk \(indyhumane.org\)](https://indyhumane.org/mutt-strut-20th-anniversary-5k-biscuits-and-brews-fun-run-walk) We would love to get our members together while giving back by helping raise money for IndyHumane. I can't wait to meet everyone in person at Mutt Strut!

I would like for our members to submit interesting papers, articles, items of interest or happenings at your institutions that you might like to see in our newsletter. Please feel free to email [kaitlyn.harris@covance.com](mailto:kaitlyn.harris@covance.com) with any submissions. I want this to be YOUR newsletter full of things that are important to you!

Have a great September!

Arlene Gross, RLAT

INAALAS Branch President





**A one-size  
solution **does**  
not fit all.**

**We understand every customer's situation is different.** You deserve a partner who understands your challenges and goals. At Medline, we work together to customize solutions to fit your exact needs.



Precision products  
built for you.



Supplies delivered  
when and where  
you need them.



Control costs and  
improve efficiency.



**We make  
healthcare  
run better.™**

**How can we help your facility?**

Contact your Medline Representative to learn more and  
visit us at [www.medline.com/educationandresearch](http://www.medline.com/educationandresearch).



## Board Member Spotlight:

**Board Member:** Andi Barber  
**Position:** Council Member

**Q: Where do you work and what is your current position?**

**A:** I currently work as a veterinary technician on the Clinical Veterinary team at Labcorp.

**Q: What would you say is your area of expertise?**

**A:** I don't really have a particular area of expertise, but I seem to know a lot about a little bit of everything. One of my favorite things to do is dental cleanings, though.

**Q: How long have you worked in the field of Laboratory Animal Science?**

**A:** I have worked at Labcorp for 4 years. My first 2 years, I was an in-life technician in DART working with mainly rats and rabbits. Prior to laboratory medicine, I worked as a veterinary technician in general practice and relief emergency for 10 years.

**Q: What makes you passionate about what we do in our field of work?**

**A:** I am passionate about our field of work, because these animals are sacrificing a lot, sometimes everything, for the bigger picture. Without these animals, treatments and cures for diseases and syndromes would not be as advanced as they already are. I want to make the animals' time with us as enjoyable as I can.

**Q: When did you realize you wanted to work with animals?**

**A:** I knew I wanted to work with animals since I was very young. I originally wanted to work with marine life, but soon realized my love was with animals of all kinds.

**Q: What is your favorite species to work with and why?**

**A:** My favorite species to work with is monkeys. Their individual personalities and watching them learn makes them so much fun to work with.

**Q: What are your hobbies?**

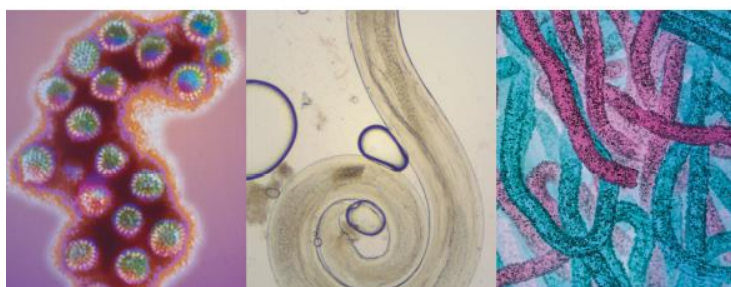
**A:** I enjoy hanging out with friends as much as possible-usually something outside like bonfires or pool.

**Q: Do you have any pets?**

**A:** I have 2 orange tabby cats, Reba and Waylon, and a very spoiled Chesapeake Bay Retriever, Loretta.

charles river

Introducing  
**PathogenBinder™**  
 Collection Kit



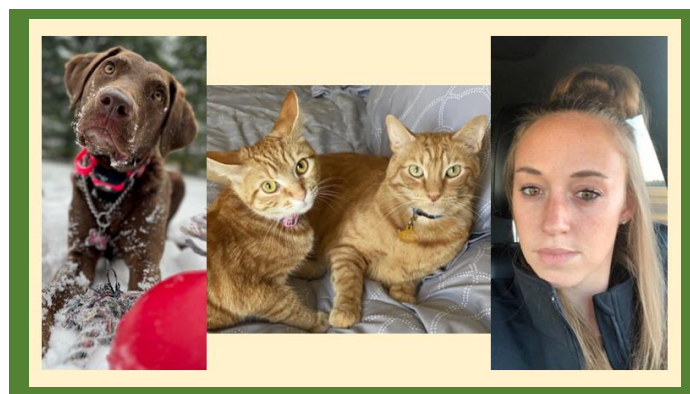
### Key Benefits

Improves detection and reduces animal usage, supporting the 3Rs

Compatible with all caging types

Provides a standard detection method that can be used facility-wide

Request Your Free  
**PathogenBinder™ Collection Kit**  
[www.criver.com/pathogenbinder](http://www.criver.com/pathogenbinder)





## Technician Spotlight:

**Technician:** Koren Heiny

**Q: Where do you work and what is your current position?**

**A:** I am currently an Animal Care Technician 2 and I work at Taconic Biosciences Inc. in Cambridge City, Indiana.

**Q: What would you say is your area of expertise?**

**A:** Coming into areas or barriers and helping the barrier get back on track with it's production.

**Q: How long have you worked in the field of Laboratory Animal Science?**

**A:** 5 years.

**Q: What makes you passionate about what we do in our field of work?**

**A:** Knowing I am helping to save the lives of human kind.

**Q: When did you realize you wanted to work with animals?**

**A:** When I was working at a youth center for kids.

**Q: What is your favorite species to work with and why?**

**A:** Nudes and the NOGS were my favorite because of the challenge it provided me.

**Q: What are your hobbies?**

**A:** Gardening, landscaping, and helping in the community when I can.

**Q: Do you have any pets?**

**A:** I have 1 indoor dog, and 2 stray outdoor cats.



**Follow Our New Facebook Page:**



**INAALAS Branch >**

**Stay up-to-date on:**

- Upcoming Events
- AALAS News
- AALAS Education
- Upcoming Meetings

The advertisement displays a collection of laboratory equipment for small animal research, categorized into four main areas:

- Anesthesia:** Includes a ventilator and a vaporizer.
- Ventilation:** Shows a ventilator unit.
- Surgical Instruments:** Displays various surgical tools and a tray.
- Physiological Monitoring:** Features a monitor and a data logger.
- Noninvasive Blood Pressure Monitoring:** Shows a monitor and a data logger.

**Kent Scientific CORPORATION**  
Providing small animal researchers with over 30 years of innovation.

# AALAS Puzzle of the Month:

## Common Strains of Laboratory Rats:

### Word Bank:

Brown Norway  
Buffalo  
Copenhagen  
Fischer  
Lewis  
Long Evans  
Nude  
Sprague Dawley  
Wistar  
Zucker

B L O E N D F Y S J Y S O N P  
O I O U P R H R B A U P Q E C  
M L D N O I E O W J H R W G M  
W E A W G H C R F P Z A Y A A  
O I D F C E O A V D M G S H P  
Z P P S F N V R E K C U Z N R  
L U I E N U L A W P Z E L E A  
K F A W R H B M N X R D H P T  
G R O E S L E W W S X A D O S  
N R T H O J L L S T K W R C I  
B C V C T K M Z W H L L C Q W  
V U S H I R P N S J L E W I S  
C J P K G K U L T D M Y H R X  
N K X E W V K T Q Y P F I L F  
H E G M N F F T K T B I K J X



Join us for our first  
Event!

Register for Mutt  
Strut at:

[Check out INAALAS' team  
fundraising page for  
IndyHumane](#)

When: October 14<sup>th</sup>  
@10:00 a.m.

Where:  
White River State Park

What's included with  
your registration:

- Race Bib
- Event t-shirt
- (2) Drink tickets
- Opportunity to sample variety of biscuits for humans and pups
- 5K finishers will receive a medal

Read more about Mutt  
Strut at

[https://indyhumane.org/  
mutt-strut/](https://indyhumane.org/mutt-strut/)



**SPIRE**  
INTEGRATED SOLUTIONS

Laboratory and Vivarium Applications  
**Spire is at your side**

**A Complete Solution for Vivariums and Laboratories**

Spire Integrated Solutions, a Chalmers Group Company, is a family of brands that produces world-class steam sterilizers, full range of washing equipment, refrigeration products and ancillary stainless-steel equipment. Built with non-proprietary parts, Spire solutions simplify maintenance and ensure ease of use for our life science and healthcare facilities. Spire's flexible programs reinforce equipment uptime and longevity while lowering the total cost of ownership. Be confident with Spire equipment at your side. Learn more at [www.Spire-is.com](http://www.Spire-is.com).

When critical work is underway, equipment reliability and longevity are crucial to keeping operations in motion — that's why you need Spire at Your Side.

**PRIMUS**  
**LYNX**  
**SCIENTEK**  
**CSI JEWETT**

Learn more at [Spire-is.com](http://Spire-is.com)

Polly Mariani  
Apex Laboratory Equipment Company  
312-919-1122  
[Polly@Apexlax.com](mailto:Polly@Apexlax.com)  
[www.Apexlax.com](http://www.Apexlax.com)

# A Huge Thank you to our Supporters!

William R. Britz  
President & CEO



307-331-4167  
wrbritz@BritzCo.com  
www.BritzCo.com  
307-322-4040  
307-322-4141  
1302 9th Street  
Wheatland, WY 82201

Enriching the lives of animals and humans.

Providing quality purpose bred animals since 1939

Contact Us

North America | 315-587-2295 | infous@marshallbio.com

**Experience the Research-Ready® Difference**

- ✓ No cage washing
- ✓ Better for people
- ✓ Better for animals
- ✓ Better for the environment

innovive.com | (866) 432-2437 | **Less Washing, More Science**



**TONYA BERGMAN**  
Sr. Business Development Director  
Research Models and Services

251 Ballardvale Street, Wilmington, MA 01887  
Mobile: 636-628-8623  
Tonya.Bergman@crl.com • www.criver.com

**Allentown**

**Avidity Science**

**Shepherd Specialty Paper**

**Bio-Serv**

**Kent Scientific**

**Medline**

**Apex**

**STABILITY meets SECURITY**

**FAT FIBER PROTEIN**

LabDiet 5053 showed consistent nutrient levels across an 18-month period.

LabDiet is invested in your research, and we understand that product stability is one of your top concerns. We thoroughly tested our products, ensuring they stand up to temperature, travel, humidity, and time. Our superior manufacturing, research, quality, and formulae mean you can do your research in confidence.

Go to [LabDiet.com/ProductStability](http://LabDiet.com/ProductStability) to view our proven results.

**LabDiet**  
Your work is worth it.  
[info@labdiet.com](http://info@labdiet.com) • [www.LabDiet.com](http://www.LabDiet.com)



**Jon LEDFORD**

Regional Sales Director, South East & Mid West  
cell 484 798 7687 | e-mail: [jledford@tecniplastusa.com](mailto:jledford@tecniplastusa.com)

Toll Free 877 669 2243 | Fax 484 875 0511

PO Box 1209, West Chester, PA 19380  
[www.tecniplastusa.com](http://www.tecniplastusa.com)



## Indiana AALAS Chapter Membership

**NO CHARGE for 2023!!**

### **2024 Membership Opportunities:**

**\*\* Individual Membership Early Bird Special\*\***

**\$25 if received by November 15, 2023**

Individual Membership (after November 15, 2023): \$30

Student Membership (proof of school registration required): \$15

### **Institutional Memberships: \$30 per member**

0-10 members / No discount

11-20 members / 5% discount

21-50 members / 10% discount

51-75 members/ 15% discount

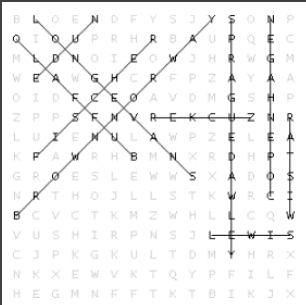
76+ members / 20% discount

### **Vendor Memberships:**

\$100 - Includes 2 memberships and placement on newsletter

(Additional memberships available for \$30 each.)

## AALAS Puzzle Answers:



## Upcoming INAALAS Events:

**Mutt Strut-** October 14<sup>th</sup> @10:00a.m.

**Where-** White River State Park

**\*\*Be sure to register under our team "INAALAS"**

## Upcoming AALAS Events:



**Save the Date!**  
**2024 District 5**  
**AALAS Meeting**

May 1-3, 2024

Columbus, Ohio

Renaissance Westerville-Polaris Hotel

